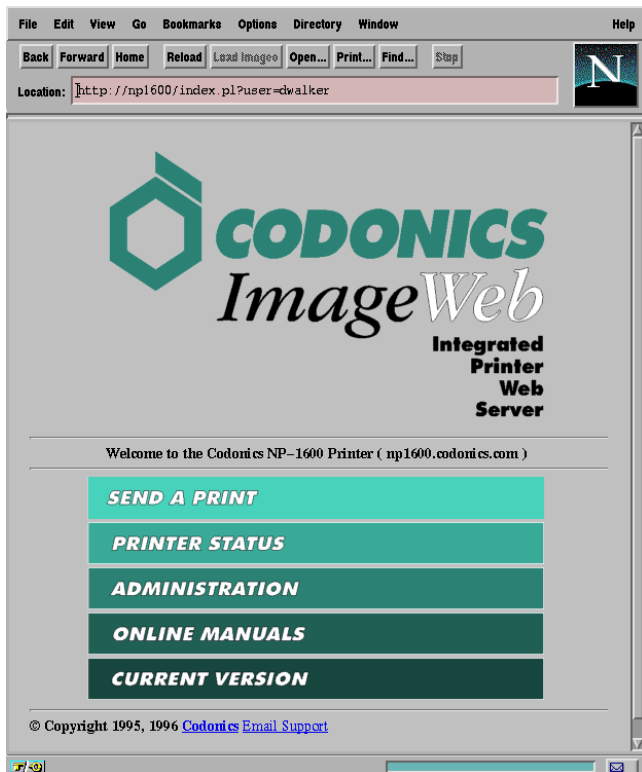


ImageWeb Integrated Printer Web Server

Overview

This document describes the *ImageWeb Integrated Printer Web Server* for the Codonics NP-1600 Series of Network Printers. ImageWeb is designed to simplify many printer administrative and printing tasks by providing an easy-to-use point-and-click interface based on the popular Netscape Navigator Web Browser. ImageWeb incorporates a Web server directly into the printer which displays a graphical interface for printer administration, interactive Web based printing, monitoring of printer status, and on-line documentation. These features can be accessed using Netscape Navigator 2.0 or later as shown by the printer's home page below.



ImageWeb's core technology is based on HTTP and HTML. As these standards evolve, the appearance and functionality of future ImageWeb releases will likely change to take advantage of new features.

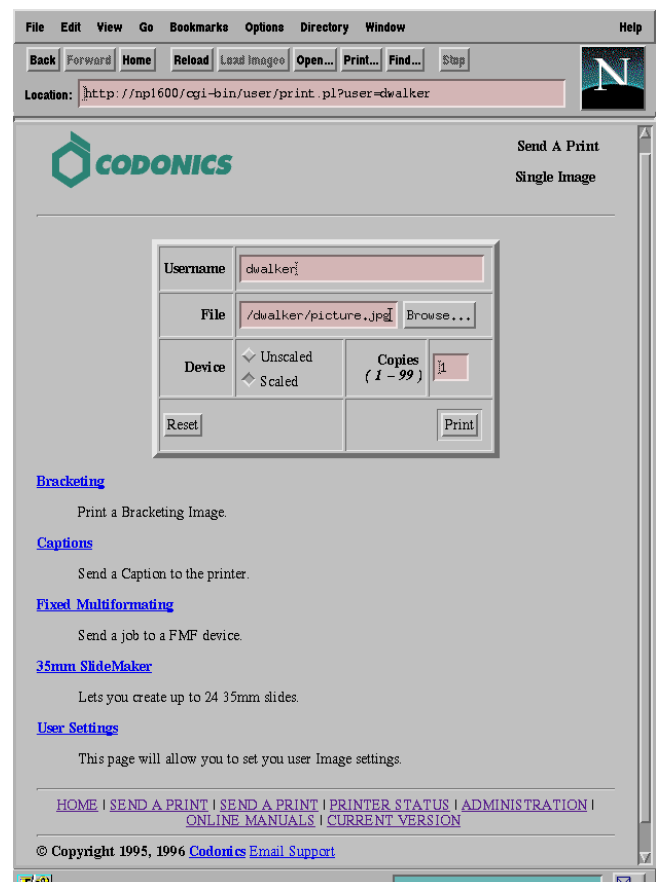
ImageWeb is a standard feature beginning with NP-1600 Operating Software Release 1.5.0 and later. ImageWeb is a replacement for earlier releases of Security and Accounting.

Functional Summary

ImageWeb provides access to most printer functions through a series of Web "pages". Each page is designed to perform a specific function using standard HTML constructs such as links, form tables, graphics and text. The pages are organized in a hierarchical menu structure which starts at the home page and continues through many sub-pages. Traversing through the menu structure is done by selecting links which lead to other pages or completing form tables.

The home page contains five main links which divide ImageWeb in functional sections. The following information describes the five sections and provides a few sample screens which demonstrate the ImageWeb interface.

1. SEND A PRINT.



This feature simplifies printing tasks by providing an intuitive, graphical interface for using many of the advanced features of the NP-1600. Pages in this section make extensive use of HTML form tables. Features supported through this interface include:

- ◆ Print a single image.
- ◆ Print multiple images (Fixed Multiformating).
- ◆ Print 35mm slides on transparency media.
- ◆ Produce "Bracketing" prints for color adjustment.
- ◆ Set printer captions.
- ◆ Setting user preferences (Gamma, Contrast, TCR, MCM, Rotation, Antialiasing).

2. PRINTER STATUS

Printer Status
Updated Once a Minute

Status: Ready Date: 08-Aug-1996 15:40

Media: A-Size Paper Printer ID: 8071-2fd5
Ribbon: CMY E-net Addr: 08:00:20:71:2f:d5
Mem Config: 16MB RAM
Queues: 0 jobs in image queue Hard Drive: 420MB Quantum
0 jobs in print queue SW Version: 1.4.0.70

Captions: Bottom (2048 x 77)

Keys: POSTSCRIPT Key=00235LNSEN Temporary (12-Mar-1996, 250 days)
DICOM Key=01M6KTU3PG Temporary (23-Apr-1996, 250 days)
UNKNOWN(99) Key=9900000001 Key has missing or illegal characters
DEFF Key=036J0ZM06V Temporary (02-Apr-1996, 250 days)

Defaults: Printer (root)		User (dwalker)	
TCR	0	TCR	NOT SET
Gamma	2.00	Gamma	NOT SET
Contrast	0	Contrast	NOT SET
Antialias	None	Antialias	None
Rotate	No	Rotate	Auto
Scale	Box	Scale	Bicubic
MCM	OFF	MCM	NOT SET

[Click Here When Done](#)

[HOME](#) | [SEND A PRINT](#) | [PRINTER STATUS](#) | [ADMINISTRATION](#) | [ONLINE MANUALS](#) | [CURRENT VERSION](#)

© Copyright 1995, 1996 Codonics Email Support

This section displays the current status of the printer and user settings. It is a single page which automatically updates once per minute. The output is similar to the **stat** command.

3. ADMINISTRATION

Administration
Main Menu

[Accounting](#)
Configure and enable accounting.

[Network Configuration](#)
This will allow you to configure the printers network features.

[Default Image Settings](#)
This page will allow you to set your user Image settings.

[Security](#)
Set up the security for the printer.

[Time](#)
Set the time, date and time zone.

[Reboot](#)
Reboots the printer.

[HOME](#) | [SEND A PRINT](#) | [PRINTER STATUS](#) | [ADMINISTRATION](#) | [ONLINE MANUALS](#) | [CURRENT VERSION](#)

© Copyright 1995, 1996 Codonics Email Support

Configures and administers the printer. All major printer functions, including Security and Accounting, Network Configuration, and Default Image Settings are controlled through this section. Access to this section of ImageWeb requires the printer's root password.

4. ONLINE MANUALS

ImageWeb contains the entire NP-1600 manual, on-line, in Adobe Portable Document Format (PDF). To view this on-line documentation, it is necessary to install the Adobe Acrobat Reader (also known as Acroread) on the system running Netscape. Acroread is freely distributed from Adobe at URL <http://www.adobe.com> and is available for most platforms.

5. CURRENT VERSION

Displays current version information of the printer's software. This includes the Operating Software Release and the current version of ImageWeb.

Copyright © 1996, 1998 by Codonics, Inc. Codonics, Codonics logo, 35mm SlideMaker, Fixed Multiformating, FMF, Variable Multiformating, VMF, TrueColorRendering, TCR, Medical Color Matching, MCM, Bracketing, ImageWeb and NP-1600 are trademarks of Codonics, Inc. All other registered and unregistered trademarks are the property of their respective owners. Specifications subject to change without notice. Patents Pending. Printed in U.S.A. CDNX-20-309 Rev. 980129

Get it all with just one call
1-800-444-1198



17991 Englewood Drive
Middleburg Heights, OH 44130 USA
(440) 243-1198
(440) 243-1334 Fax
Email info@codonics.com
www.codonics.com